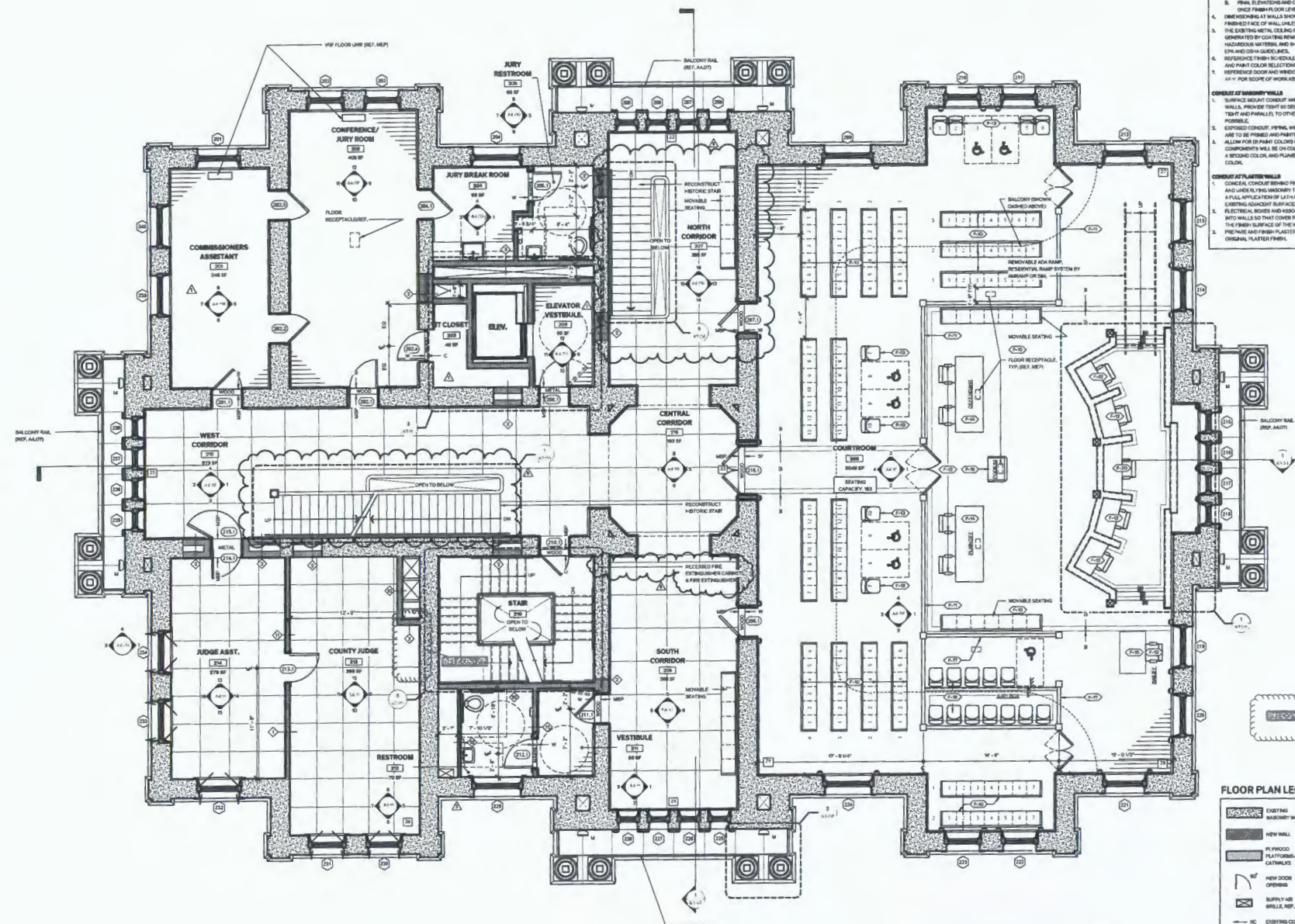


1 Ground Level Floor Plan
 1/4" = 1'-0"



GENERAL NOTES

- GENERAL:**
- FINISH-EXPOSED SURFACES UNLESS NOTED OTHERWISE. THE CONTRACTOR SHALL ASSUME FULL RESPONSIBILITY FOR THE COORDINATION OF THE COUNTY FINISH-OUT OF THE PROJECT. ANY SURFACES WHICH DO NOT HAVE A SPECIFIC FINISH NOTED, NOR ARE NOTED TO REMAIN UNFINISHED SHALL BE BROUGHT TO THE ATTENTION OF THE ARCHITECT AND FINISHED PER THE ARCHITECT'S DIRECTION.
 - CONTRACTOR TO FIELD VERIFY EXISTING WALL THICKNESS.
 - FINISH FLOOR ELEVATIONS:
 - EXISTING FLOOR FINISH AND CEILING HEIGHTS ARE APPROXIMATE AND ARE TO BE VERIFIED IN THE FIELD BY THE CONTRACTOR.
 - FLOOR FINISH ELEVATIONS AND CEILING HEIGHTS WILL BE DETERMINED ONCE FINISH FLOOR LEVELS ARE ESTABLISHED IN CORRIDORS.
 - CONCRETE FINISH WALLS SHOWN IN FINISHED FACE OF WALL TO FINISHED FACE OF WALL UNLESS NOTED OTHERWISE.
 - THE EXISTING METAL CEILING PANELS ARE KNOWN TO CONTAIN LEAD. WHITE OPERATED BY COUNTY REMOVAL. PROCESS SHALL BE CLASSIFIED AS HAZARDOUS MATERIAL AND SHALL BE REMOVED IN ACCORDANCE WITH EPA AND OSHA GUIDELINES.
 - REFER TO FINISH SCHEDULE ON SHEET 10-1 FOR ROOM FINISH AND PAINT COLOR GUIDELINES.
 - REFER TO DOOR AND WINDOW SCHEDULES ON SHEETS 10-1 & 10-2 FOR SCOPE OF WORK ASSOCIATED WITH DOORS AND WINDOWS.
- CONCRETE AT FINISH WALLS:**
- SURFACE ROUGH CONCRETE AND J-BOSSES PARALLEL TO FLOOR AND WALLS. PROVIDE TRIM TO DISGUISE JENNE AT CORNERS AND BANG TRIM AND PARALLELS TO OTHER FINISH AND CONDUIT WHERE POSSIBLE.
 - EDGED CONDUIT, FIBER WIRING, ACCESSORIES, FASTENERS, ETC. ARE TO BE FINISH AND PAINTED.
 - ALLOW FOR IN-PART COLORS ON ANY COMPONENTS. MECHANICAL COMPONENTS WILL BE ON-COLOR. ELECTRICAL COMPONENTS WILL BE A SECOND COLOR, AND PLUMBING COMPONENTS WILL BE A THIRD COLOR.
- CONCRETE AT PLASTER WALLS:**
- CONCRETE CONDUIT FINISH FACE OF PLASTER. ROOF PLASTER AND UNDERLYING MEMORY TO ACCEPT CONDUIT AND TO ALLOW FOR A FULL APPLICATION OF LATH AND PLASTER. PLASTER IS TO MATCH EXISTING ADJACENT SURFACES.
 - ELECTRICAL BOXES AND ASSOCIATED DEVICES ARE TO BE RECESSED INTO WALLS SO THAT COVER PLATES AND DEVICES ARE FLUSH WITH THE FINISH SURFACE OF THE WALL.
 - PRE-FAB AND FINISH PLASTER WALLS AS REQUIRED TO MATCH ORIGINAL PLASTER FINISH.



FLOOR PLAN LEGEND

	EXISTING MASONRY WALL		CONC. COPY FINISH FLOOR
	NEW WALL		BUILT-UP STONE MASONRY WALL
	FINISHED PLATFORM/CATALYTIC		FURNITURE TAG (REF. PLUMBING SCHEDULE)
	NEW DOOR OPENING		HISTORIC DOOR OPENING
	SUPPLY AIR BR/LL, REF. MEP		RETURN AIR BR/LL, REF. MEP
	EXISTING CONCRETE FLOOR		TILE FLOOR
	CONCRETE FLOOR		CAST IRON
	WOOD FLOOR		CONCRETE TOPPING
	CUSTOM SHEET FLOORING		MORTAR-BASED POLYMER CONCRETE

1 Second Level Floor Plan
10-1-10

TEXAS HISTORICAL COMMISSION
real places telling real stories



FANNIN COUNTY COURTHOUSE
INTERIOR & EXTERIOR RESTORATION

DR. E. Sam Ruppberg, Director
Houston, Texas 1988

COPYRIGHT:
The Contractor shall verify and be responsible for all dimensions. DO NOT scale the drawing. Any errors or omissions shall be reported to Architect within 10 days. The Copyright is all drawings and drawings are the property of Architect. Reproduction or use for any purpose other than that authorized by Architect is prohibited.

REVISION HISTORY

1	8/24/18	PG-01
2	1/27/20	REV 01
3	5/15/20	REV 02
4	8/25/2020	REV 03

ISSUED FOR CONSTRUCTION

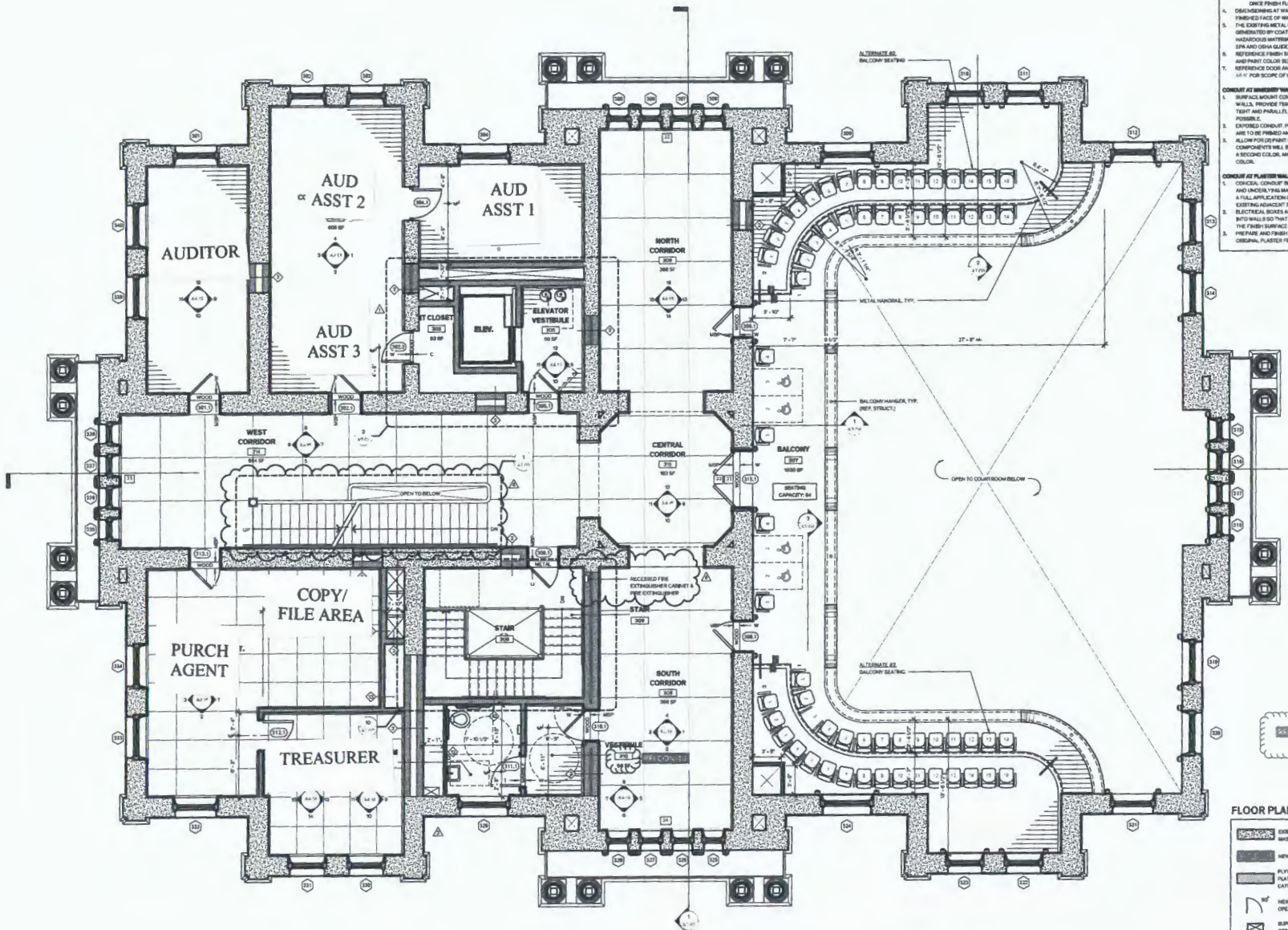


1/15/20 1/15/20

Architect's Title: Date
1/15/20 Apr 25, 2020

Sheet Name: SECOND LEVEL FLOOR PLAN

Sheet Number: A1.08



GENERAL NOTES

- GENERAL**
1. FINISH EXPOSED SURFACES UNLESS NOTED OTHERWISE. THE CONTRACTOR SHALL ASSUME FULL RESPONSIBILITY FOR THE COORDINATION OF THE CONTRACT FINISH-OUT OF THE PROJECT. ANY SURFACES WHICH DO NOT HAVE A SPECIFIC FINISH NOTED, NOR ARE NOTED TO REMAIN UNFINISHED SHALL BE BROUGHT TO THE ATTENTION OF THE ARCHITECT AND FINISHED PER THE ARCHITECT'S INSTRUCTION.
 2. CONTRACTOR TO FIELD VERIFY EXISTING WALL THICKNESS.
 3. FINISH FLOOR ELEVATIONS:
 - A. EXISTING ELEVATIONS AND CEILING HEIGHTS ARE APPROXIMATE AND ARE TO BE VERIFIED IN THE FIELD BY THE CONTRACTOR.
 - B. FINAL ELEVATIONS AND CEILING HEIGHTS TO BE DETERMINED ONCE FINISH FLOOR LEVELS ARE ESTABLISHED IN CORRIDORS.
 4. DISCREPANCY AT WALLS TO FORM BE FINISHED FACE OF WALL TO FINISHED FACE OF WALL UNLESS NOTED OTHERWISE.
 5. THE EXISTING METAL COLUMN PAINT IS KNOWN TO CONTAIN LEAD. WASTE GENERATED BY COATING REMOVAL PROCESS SHALL BE CLASSIFIED AS HAZARDOUS MATERIAL AND SHALL BE REMOVED IN ACCORDANCE WITH EPA AND OSHA GUIDELINES.
 6. REFERENCE FINISH SCHEDULE ON SHEET 14-117 FOR ROOM FINISH AND PAINT COLOR SELECTIONS.
 7. REFERENCE DOOR AND WINDOW SCHEDULES ON SHEETS 14-114 THRU 14-117 FOR SCOPE OF WORK ASSOCIATED WITH DOORS AND WINDOWS.

- CONCRETE AT BRICKWORK WALLS**
1. SURFACE MOUNT CORNER AND MOULD PARALLEL TO FLOOR AND WALLS. PROVIDE 75-70 DEGREE BEVEL AT CORNER AND BRASS TRIM AND PARALLEL TO OTHER FINISH AND CONCRETE WHERE POSSIBLE.
 2. EXPOSED CONCRETE: REPAIR, HATCH, REFINISH TO FASTENERS, ETC. ARE TO BE FINISH AND PAINTED.
 3. ALLOW FOR DEPENDANT COLOURS ON NEW COMPONENTS. MECHANICAL COMPONENTS WILL BE ON COLOUR. ELECTRICAL COMPONENTS WILL BE A SECOND COLOUR, AND PLUMBING COMPONENTS WILL BE A THIRD COLOUR.

- CONCRETE AT PLASTER WALLS**
1. CONCEAL CONDUIT BEHIND FINISH FACE OF PLASTER, ROOF PLASTER AND HATCH THE MASONRY TO ACCEPT CONDUIT AND TO ALLOW FOR A FULL APPLICATION OF LATH AND PLASTER. PLASTER IS TO MATCH EXISTING ADJACENT SURFACES.
 2. ELECTRICAL BOXES AND ASSOCIATED ELEMENTS MUST BE RECESSED INTO WALL SO THAT COVER PLATES AND DEVICES ARE FLUSH WITH THE FINISH SURFACE OF THE WALL.
 3. PREPARE AND FINISH PLASTER WALLS AS REQUIRED TO MATCH ORIGINAL PLASTER FINISH.

FLOOR PLAN LEGEND

	EXISTING MASONRY WALL		CORE/GRV CORE FINISH FLOOR
	NEW WALL		S/L-U-P STONE MASONRY WALL
	PLYWOOD PLATFORMS/CATWALKS		FORMWORK TAG REP. FURNISHINGS SCHEDULE
	NEW DOOR OPENING		HISTORIC DOOR OPENING
	SUPPLY AIR WELLS, RSP, SSP		RETURN AIR WELLS, RSP, SSP
	EXISTING CONCRETE FLOOR		TILE FLOOR
	CONCRETE FLOOR		CAST BOX
	WOOD FLOOR		CONCRETE TOPPING
	CUSTOM SHEET FLOORING		MORTAR-BASED POLISHED CONCRETE

1 Third Level Floor Plan
1/4" = 1'-0"



COPYRIGHT
The Contractor shall verify and be responsible for all dimensions. DO NOT scale the drawing. Any errors or omissions shall be reported to Architect immediately. This Copyright is all original and drawings are the property of Architect.
Reproduction or use for any purpose other than that authorized by Architect is prohibited.

REVISION HISTORY

1	8/29/10	PK-01
2	1/27/11	RP-01
3	6/28/10	MS-1

ISSUED FOR CONSTRUCTION

Architect: **Architexas Inc.** Date: **April 28, 2010**
Title: **THIRD LEVEL FLOOR PLAN**
Sheet Number: **AL10**